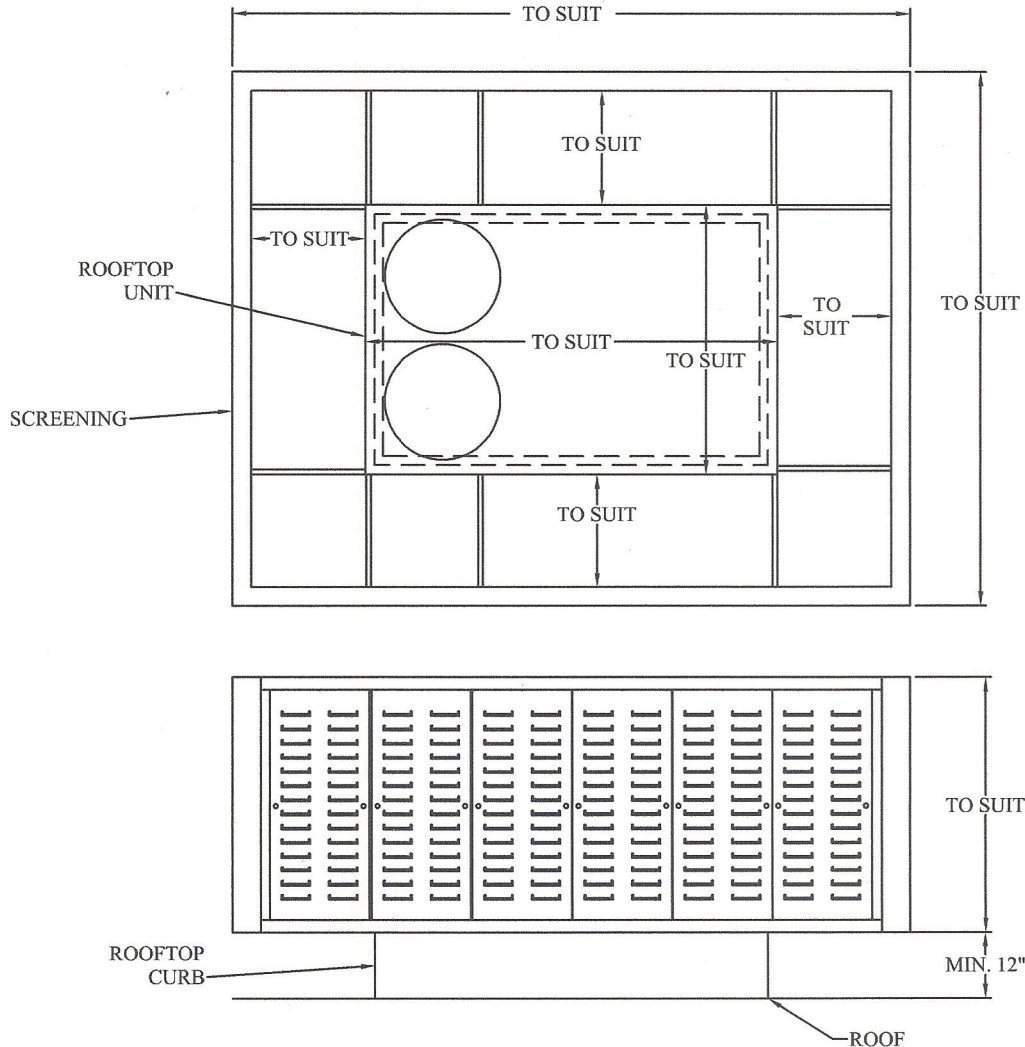


## "LOUVERED" OR "CORRUGATED" SLIDING PANEL ARCHITECTURAL SCREENING SPECIFICATION (LOUVERED STYLE SHOWN)



The successful bidder shall supply Spinnaker Industries "Louvered" or "Corrugated" Direct Attached Screening Systems as selected by the architect. The screening system shall be mounted directly to the mechanical equipment so that no roof penetration will be required, or allowed. All panels shall be sliding style to provide access to all compartments for service and maintenance. **The screening system shall be rated to withstand lateral forces developed due to wind speeds of 225mph** and shall conform to the following standards, codes and references:

- American Society for Testing and Materials: ASTM B 221-96 - Aluminum and Aluminum Alloy Extruded Bars, Rods, Wire Profiles, and Tubes.
- The Aluminum Association, Inc.: AA ADM-1516166 (1994) - Aluminum Design Manual.
- American Society of Civil Engineers: ASCE 7-95 - Minimum Design Loads for Buildings and Other Structures.
- The Florida Building Code: (FBC 2007) - Evaluation of Wind and Seismic forces and the design of connections.
- International Building Code: (IBC 2006) - Evaluation of Wind and Seismic forces and the design of connections

The screening system shall come complete with galvanized steel out-riggers (min. thickness 0.062, 16 gauge), extruded aluminum tracks (min. thickness 0.050, 18 gauge), painted panels and top trim (min. thickness 0.030, 22 gauge) and stainless steel fasteners and mounting hardware. The paint shall be a powder polyester with a baked on finish that meets ASTM B-117-85 standard for 500 hour salt spray, ASTM D-3363-74 standard for H-2H pencil hardness, and ASTM D-3359-83 for adhesion.

It is the installer's responsibility to verify all field conditions and unit accessories prior to fabrication and delivery. Any modifications required in the field must be approved by the manufacturer and related costs shall be borne by the installing contractor. For Nationwide Distribution and Installation contact the following:  
North American Enclosures, Inc.: Stephen Smith (630) 290-7911 [www.northamericanenclosures.us](http://www.northamericanenclosures.us)

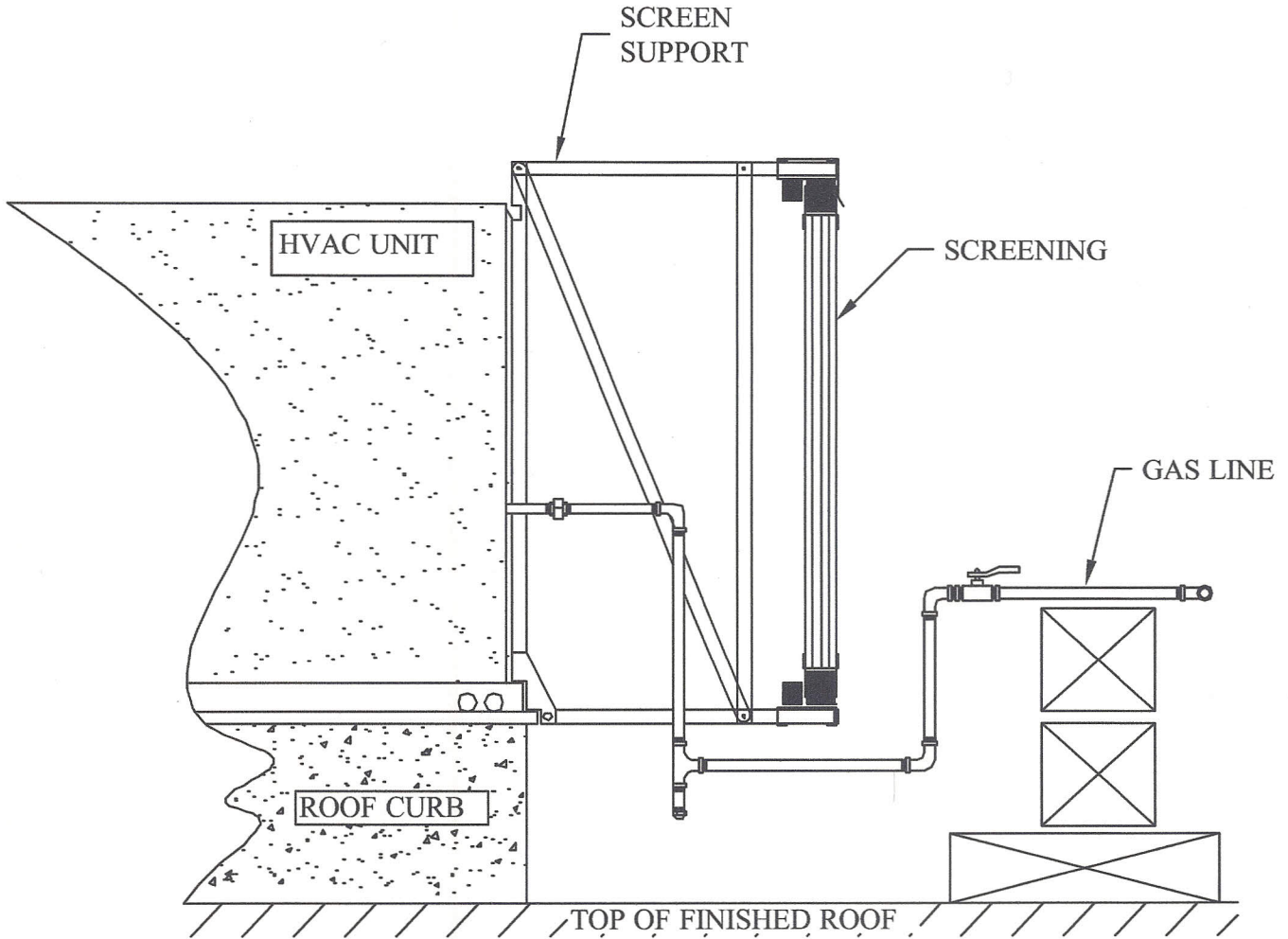
5000174

APRIL 22, 2009

27 Leading Road Etobicoke, Ontario, Canada M9V 4B7  
Tel: (416) 742-0598 Fax: (416) 742-4251  
4846 Jennings Lane, Louisville, Kentucky, USA 40218  
Tel: 1-800-932-6210 Fax: 1-800-903-7294



# GAS LINE ARRANGEMENT #1



GAS PIPING SYSTEM MUST BE INSTALLED TO SUIT LOCAL CODE REQUIREMENTS.

5000026  
MAY. 31 / 05

27 Leading Road Etobicoke, Ontario, Canada M9V 4B7  
Tel: (416) 742-0598 Fax: (416) 742-4251  
4846 Jennings Lane, Louisville, Kentucky, USA 40218  
Tel: 1-800-932-6210 Fax: 1-800-903-7294